

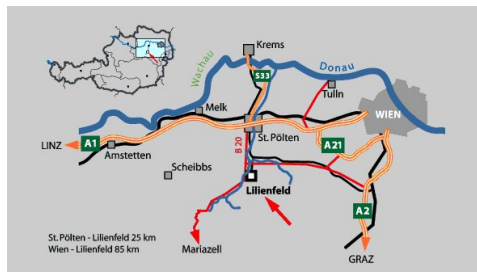


The Wide Land



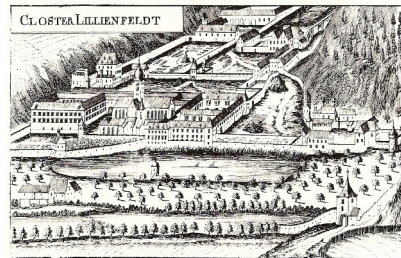
You can reach Lilienfeld by public transport or by car via the central

hub of St. Pölten. There's a train station in Lilienfeld, just a 10-minute walk from the Scout Center. There are ample parking spaces for buses and cars about 200 meters from the Scout Center. The house is secluded, surrounded by a large meadow, a beautiful forest and at the foot of the mountains.



Genesis of Downhill Skiing

Very few people know it but Lilienfeld is the cradle of alpine skiing. In the 1890s, the Lilienfeld ski pioneer Mathias Zdarsky developed steel bindings and the skiing techniques to go with them.



Lilienfeld Cistercian Abbey

The largest medieval monastery in Austria was founded in 1202 by the Babenberg Duke Leopold VI the Glorious.

LOWER AUSTRIA
Simply refreshing



Pfadfindergruppe Lilienfeld
Liftstrasse 1

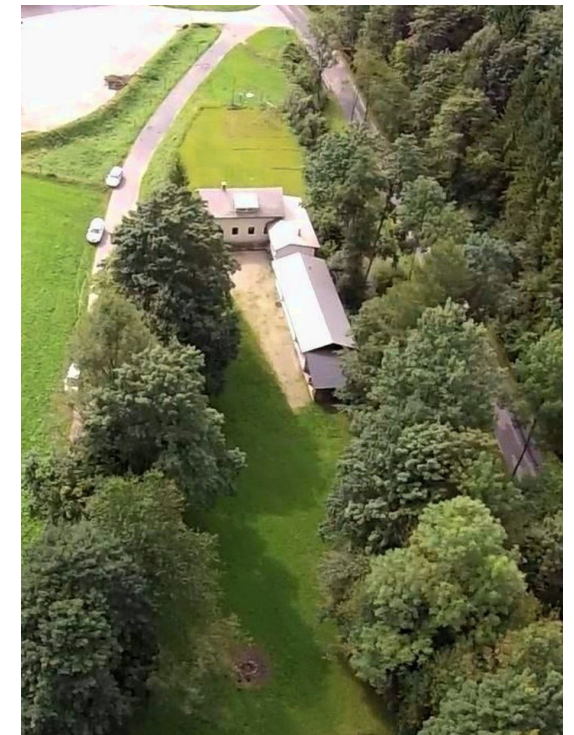
E-Mail: pfadfindergruppe.lilienfeld@gmx.at
Web: www.lilienfeld.scout.at



PFADFINDER*INNEN
ÖSTERREICH
Lilienfeld

Nature and Adventure

Our Center for
Scouting and
Guiding in
Lilienfeld



Redesigned for adventurers and explorers

The Scout Center offers you, your children, young people, and leaders the ideal location



for activities. Whether it's a weekend camp, summer camp, or a leader training, you'll find everything you need in Lilienfeld.

From shopping opportunities, hiking trails, playgrounds, wooded areas for outdoor

games, a public bath and museums. In summer, the legendary rubber dinghy race starts here as part of the Lilienfeld Summer Holidays. The Traisen River offers numerous

opportunities for water sports. So, whether in summer or winter, it's always in season here.



© W.St 2025

Activities & Pure Nature

- ... Playground in front of the house
- ... Forest areas opposite the house
- ... Stream right by the house
- ... Numerous hiking trails and a chairlift
- ... Water activities at the river Traisen or in the local public bath
- ... Excursions to St. Pölten
- ... Winter activities (sledding, skiing, etc.)

Our Club House

The Lilienfeld Scout Center is one of the oldest Scout centers in Lower Austria. It has been completely renovated and now boasts a new lease of life. You'll find a fully equipped kitchen with a dishwasher, refrigerator, and dishes. Hot showers, a bathroom, and restrooms ensure a comfortable stay. A spacious vestibule offers space for supplies and clothing. The common room is versatile. The bedrooms are located on the upper floor. We have a dormitory for approximately 16 people



The kitchen



The Lounge



Sleeping room

For the colder months, we have central heating, with each radiator individually adjustable. There's a wood-burning stove in the common room, which dries clothes in no time during wet weather. You can view a floor plan of the house on our website to get an even more detailed overview.

The camp side

We have ample space for tents. You'll find plenty of shade under the trees. Lumber, bricks, and planks are available. Private restrooms and covered areas have been available since 2011. This allows the use of both campsites even without a house.



Sanitärraum

The offer

We're confident we can offer you and your group a fair deal. Price and performance should always be in balance. Please contact us via our website. We'll be happy to provide you with our current rates.

www.lilienfeld.scout.at/lagerplatz

pfadfindergruppe.lilienfeld@gmx.at

OUTDOOR

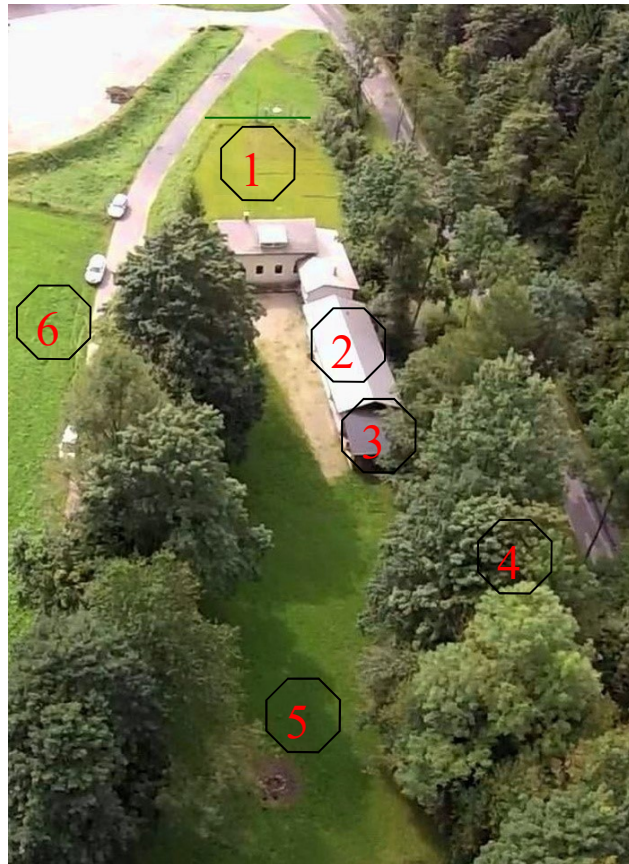
adventure your life!



PFADFINDER*INNEN
ÖSTERREICH
Lilienfeld



North Storage Area (5) view of the house and carport



- 1 ... South Campground (approx. 800 m², length 45 m)
- 2 ... Restrooms, shower, laundry room (as well as storage space not available for rent)
- 3 ... Carport with outdoor kitchen, refrigerator, grill and washing-up area (water heater)
- 4 ... Stream (approx. 4 m below site level, but no risk of flooding)
- 5 ... North Campground (approx. 1600 m²) and fire pit
- 6 ... Playground (use only after consultation)



Camp meadow south (1) with flagpole



Adventure—stream (4)



Firewood, timber, boards



Additional sink and drain for dishwater at the carport; the outdoor kitchen is in the background.

INDOOR



New kitchen since 2020:
15m², electric stove with ceramic hob and convection oven, dishwasher, refrigerator with freezer compartment, and tableware for approximately 30 people



Storage space for sufficient dishes and ingredients

GROUND FLOOR



Two toilets and a bathroom with shower



Common room/lounge, approx. 35m², central heating with district heating and an additional stove

UPPER FLOOR



Bunk beds with 16 sleeping places and luggage storage space



Luggage storage space

On the upper floor there is another, smaller living room that can also be used as a bedroom for two people.